

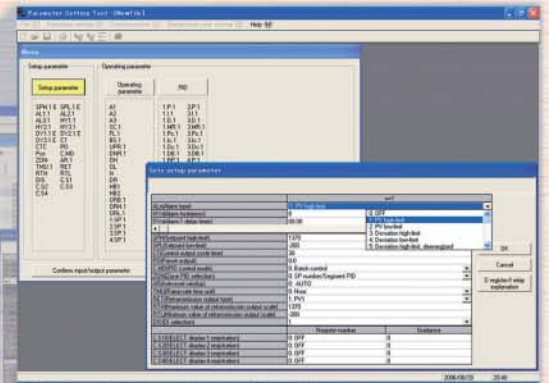


# LL100 Parameter Setting Tool

(with multi-monitoring function)

For the Green Series Digital Indicating Controllers

The LL100, **an optical communications adapter**, used to program and monitor Yokogawa controllers is now **available with USB**.  
 The adapter draws power from the USB port, so no batteries are required.

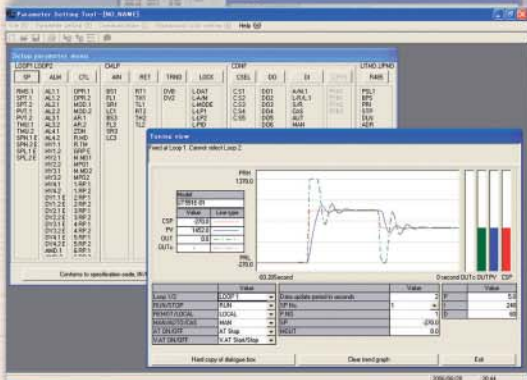


## Parameter Setting Display

Simple configuration and parameter help text. In addition to parameter setting, the following functions can be used on this display:

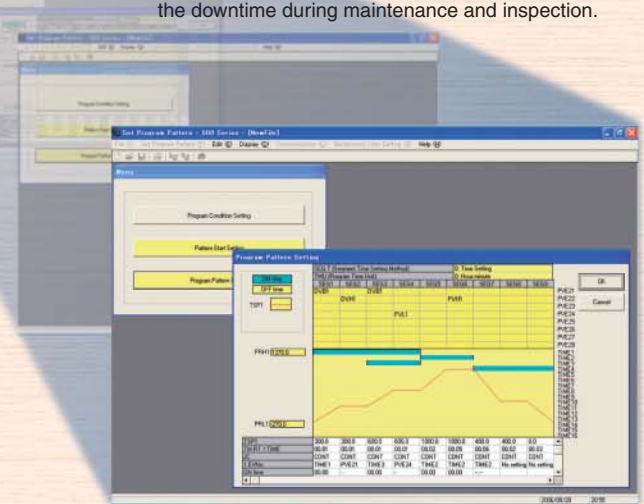
- Uploading, downloading and comparing the parameters in the controller.
- Saving and reading the parameters stored on the storage media.
- Printing out parameters.

Proper management of the setting file minimizes the downtime during maintenance and inspection.



## Tuning Display

Trend display of measured values (PV), setting values (SP), and control output values (OUT). Manual tuning is much more efficient when trends of the process can be easily viewed. Auto-tuning and output value setting during manual operation are also possible.



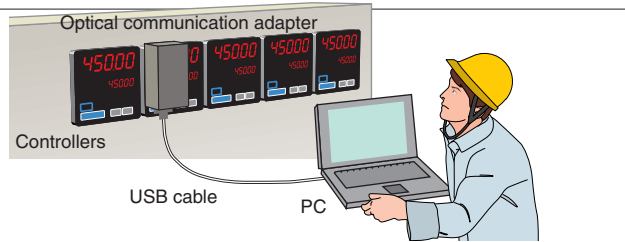
## Program Pattern Display

Used to create program patterns. The graphical pattern display allows event settings to be checked at a glance.

## 3 Types of Communication with Controllers

### 1. Optical communication by dedicated adapter

Optical communications is established by connecting the adapter to the front of the controller. This feature is useful for tuning loops during start-up and reducing downtime during maintenance. This function does not require the optional communication feature.



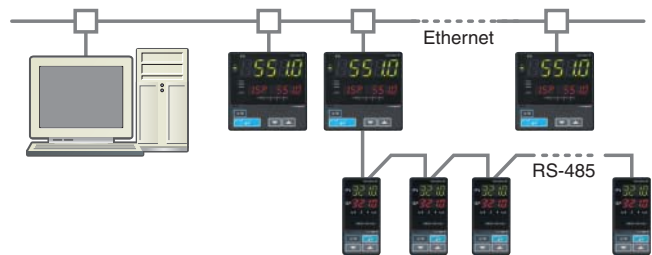
### 2. RS-485 communication (optional)

Connection for up to 31 controllers with the RS-485 communications option!  
ML2 is recommended as an RS-232C/485 converter.



### 3. Ethernet communication (optional)

Ethernet compatibility is a powerful feature for a distributed environment. The gateway function allows RS-485-compatible controllers to connect to an Ethernet Network.



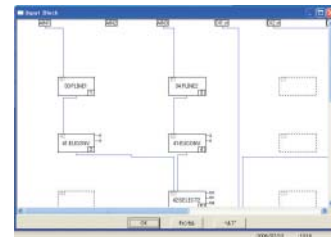
## Multi-monitoring Function for Centralized Monitoring (up to 16 loops)

- Easy-to-see trend display**  
Displays the trends of measured values (PV), setting values (SP), and control output values (OUT).
- Easy-to-understand panel view**  
Alarms can be checked at a glance.
- Automatic recognition for quick connection**  
Can view up to 16 loops.
- User-friendly tuning display**  
PID and operational settings can be changed.
- Saving in CSV format**  
Saved data can be readily used in Excel, etc.



## Custom Computation Building Tool LL200

- Dedicated to UT750 and UP750.
- Used for building custom control strategies.
- Includes the functions of the LL100.



- Connectable Models (LL100)**  
 Digital Indicating Controllers : UT320,UT321,UT350,UT351,UT420,UT450,UT520,UT550,UT551,UT750  
 Program Controllers : UP350,UP351,UP550,UP750
- Operating System**  
Windows2000 (Professional) / XP (Home Edition / Professional)
- Interface**  
USB 1.1

| Model Name | Suffix Code | Description  |
|------------|-------------|--|
| LL100      |             | Parameter setting tool                                 |
| LL200      |             | Custom computation building tool (for UT750 and UP750) |
|            | -U10        | Dedicated adapter for USB connection                   |

Note 1 : LL100 : General Specification sheet no. : GS 05G01B12-01E  
 Note 2 : LL200 : General Specification sheet no. : GS 05G01B22-01E  
 Note 3 : Ethernet is a trademark of XEROX Corporation.  
 Microsoft Windows 2000 and XP are registered by Microsoft of U.S.A.



**YOKOGAWA ELECTRIC CORPORATION**  
 Network Solutions Business Div./Phone: (81)-422-52-7179, Fax: (81)-422-52-6619  
 E-mail: ns@cs.jp.yokogawa.com

**YOKOGAWA CORPORATION OF AMERICA**  
**YOKOGAWA EUROPE B.V.**  
**YOKOGAWA ENGINEERING ASIA PTE. LTD.**

Phone: 800-888-6400, Fax: (1)-770-251-6427  
 Phone: (31)-33-4641806, Fax: (31)-33-4641807  
 Phone: (65)-62419933, Fax: (65)-62412606

**NetSOL Online** Sign up for our free e-mail newsletter  
[www.yokogawa.com/ns/](http://www.yokogawa.com/ns/)

Subject to change without notice.  
 [Ed : 01/b] Copyright ©2006  
 Printed in Japan, 609(KP)